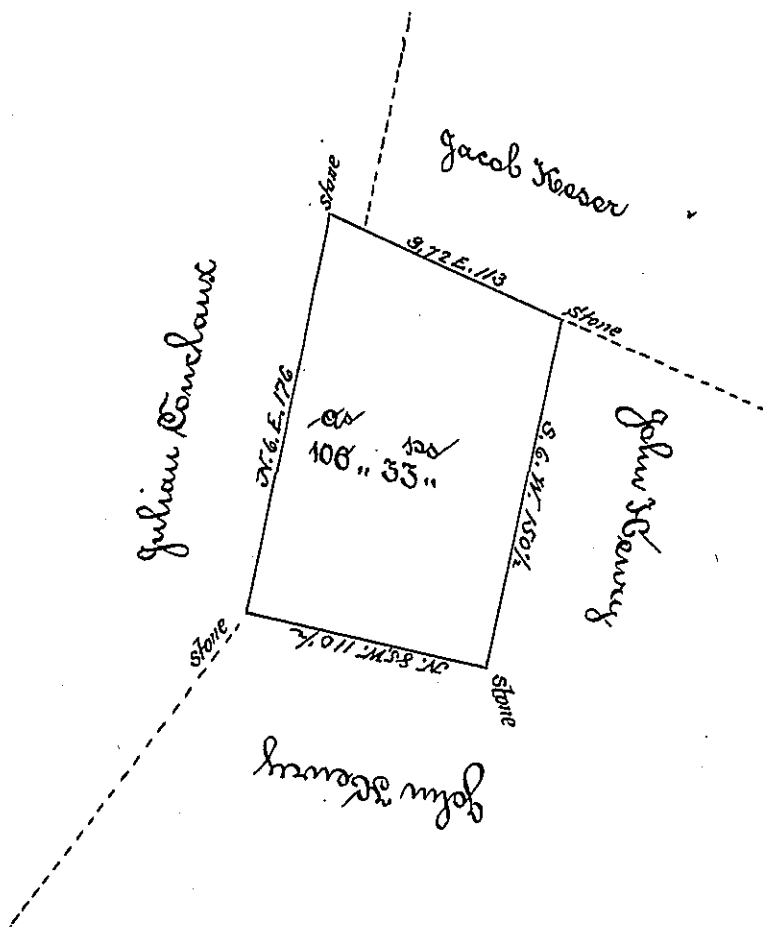


Lehman -  
PIKE.

✓



In pursuance of a warrant dated June 21<sup>st</sup> A.D. 1823 surveyed June 18<sup>th</sup> 1825 to Richard Broadhead the above described Tract of Land situated in Delaware Township Pike County containing one hundred six acres and thirty three perches and the allowance of six p. e. for roads &c.

To Gabriel Heister Esq.  
Surveyor General of Penna.

Wm. Boyce D. S.

IN TESTIMONY that the above is a copy of the original remaining on file in the Department of Internal Affairs of Pennsylvania, made conformably to an Act of Assembly approved the 16th day of February, 1833, I have hereunto set my Hand and caused the Seal of said Department to be affixed at Harrisburg, this

sixth day of July 1897.

James W. Latta  
Secretary of Internal Affairs.

